



AIM-AHEAD

Consortium Development Program

Fostering Trustworthy AI Research to Advance Health and Medicine for All Americans (FAIR-MED)

Application Preparation Webinar
May 16, 2025

- Introduction of AIM-AHEAD
- Introduction of the FAIR-MED program
- Eligibility and expectations
- Application (elements and tips)
- Review criteria
- Deadlines (submission, review, selection, and program start)
- Q & A session

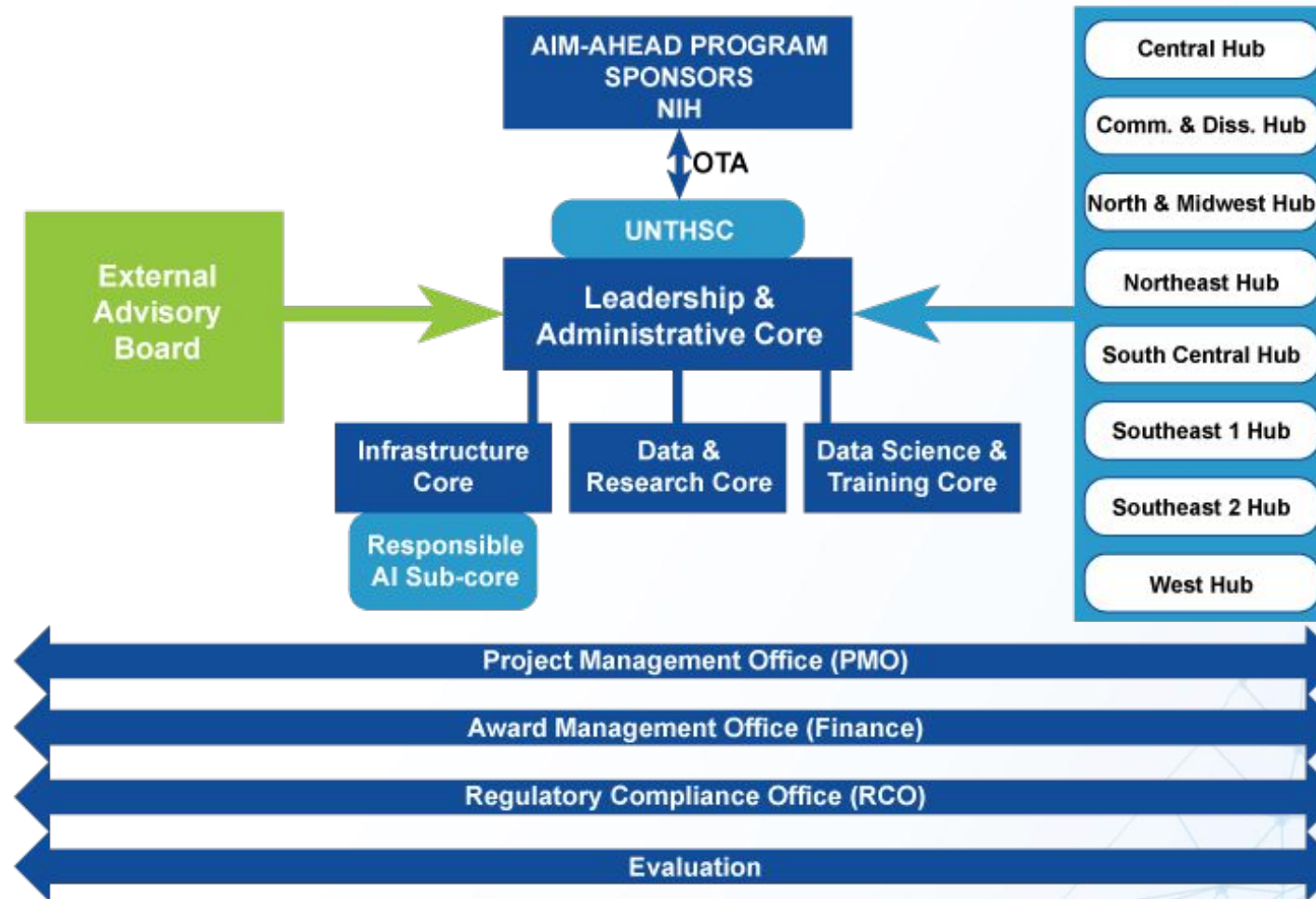
Funded by the National Institutes of Health (NIH), AIM-AHEAD aims to support researchers and communities to extend the benefits of artificial intelligence and machine learning (AI/ML) to all Americans.

Overall Organization



AIM-AHEAD Consortium Governance Framework

Overall Organization



Consistent with NIH practice and applicable law, funded programs may not use the race, ethnicity, or sex of prospective program participants or faculty as an eligibility or selection criteria.

The race, ethnicity, or sex of candidates will not be considered by AIM-AHEAD in the application review process or when making funding decisions.

Join AIM-AHEAD Connect



- AIM-AHEAD's community, networking, mentoring and career-development platform
- Virtual space to engage with the entire AIM-AHEAD Consortium and build Community!
- Custom tools available to the AIM-AHEAD Coordinating Center:
 - Connect with experts, learners, stakeholders etc.
 - Mentoring, Q&A, Video calls, Groups, Jobs Board, etc.
 - Sign-up: Event registration & information solicitation
 - Surveys: Request feedback for various activities
 - HelpDesk: Respond to topic-specific questions
 - Programs: Exclusive space, content, and mentor matching

Scan QR Code
to Join
AIM-AHEAD Connect





FAIR-MED Program

Co-Directors:



Taona Haderlein, PhD, OCHIN

Harlan Jones, PhD, UNTHSC



Bradley Malin, PhD, VUMC

Usha Sambamoorthi, PhD, UNTHSC



Y4 Consortium Development Program: FAIR-MED

Program Goal: To significantly impact healthcare access and utilization, healthcare quality and value, and health outcomes for populations that are disproportionately impacted by cancer, cardiometabolic disease and behavioral/mental health disorders.

- Projects are expected to support development of multidisciplinary research projects involving partnerships with relevant collaborators
- Requires development and implementation of AI/ML strategies that responsibly address potential concerns across the full research lifecycle—from planning to dissemination—through strong partnerships with healthcare providers.
- Leverage AI/ML to promote health for all Americans by utilizing novel algorithms or approaches grounded in trustworthy AI by considering
 - Variations in datasets, algorithms, and applications
 - Patient privacy in the data and the developed AI/ML solutions
 - Trustworthy use of data from electronic health records, wearable devices and/or medical imaging
 - Safeguarding against the unintended or adverse social, individual, and community consequences of research on, and implementation of, AI/ML solutions

Through this program, AIM-AHEAD envisions research projects that will help AI/ML research collaborators to:

- Address future monitoring of datasets, algorithms, and other potential artifacts for best practices
- Develop future plans for scaling field-tested innovations
- Develop sustainability plans
- Development of collaborative partnerships for AI/ML capacity building
- Evaluation and integration of AI in a trustworthy manner
- Improve healthcare and outcomes

Example Areas of Interest



- Human-centered and/or value-sensitive design of AI/ML
- Multidisciplinary approaches to the creation and application of AI/ML
- Community engagement
- Access to data, algorithms, and software
- Algorithmic fairness
- Privacy, security, and trust
- Legal issues where appropriate



Eligibility and Expectations

Higher Education Institutions

- Public/State Controlled Institutions of Higher Education
- Private Institutions of Higher Education

Nonprofits Other Than Institutions of Higher Education

- Nonprofits with 501 (c)(3) IRS Status
- Nonprofits without 501 (c)(3) IRS Status

For-Profit Organizations

- Small Businesses
- For-Profit Organizations (Other than Small Businesses)

Local Governments

- State Governments
- County Governments
- City or Township governments
- Special District Governments
- Indian/Native American Tribal Governments (Federally Recognized)
- Indian/Native American Tribal Governments (Other than Federally Recognized)

Other

- Independent School Districts
- Public Housing Authorities/Indian Housing Authorities
- Native American Tribal Organizations (other than Federally recognized tribal governments)
- Faith-based or Community-based Organizations
- Regional Organizations

To be eligible for this CFP, the applicant institution **must be a domestic institution located in the United States or its territories**

- Before applying, these organizations MUST be registered with System for Award Management (SAM), see <https://sam.gov/content/home>, and must maintain active SAM registration throughout the award period

Foreign Institutions

- Non-domestic (non-U.S.) Entities (Foreign Institutions) **are not** eligible to apply
- Non-domestic (non-U.S.) components of U.S. Organizations **are not** eligible to apply
- Foreign components, as defined in the NIH Grants Policy Statement, **are not** allowed to apply

Awardees are expected to fulfill the following:

- Sustained collaboration with healthcare centers and communities in regions with historically limited medical infrastructure or access to services
- Engage healthcare settings and patient representatives in planning trustworthy AI/ML development, implementation and assessment
- Demonstrate feasibility of translating trustworthy AI/ML tools or algorithms into clinical or public health or operational practice with potential to improve health outcomes for AIM-AHEAD North Star III health categories
- Augment the shared learnings of the AIM-AHEAD Consortium through the engagement of broadly representative, interdisciplinary project teams committed to tangible deliverables to advance health for all
- Participation and Reports
- Compliance and Governance
- Responsible Use of Data
- Sharing of research products
- Project Sustainability Plan

Data Available for Participants



Data set	Brief Description	Data Allowed
A customized subset from OCHIN Database	EHR data from Underserved communities	HIPAA Limited dataset, individual-patient level data with dates and geographic indicators if needed for research
Curated data from the MedStar Health EHR	EHR data from hospital system network with 31% African American patient representation	Multiple curated dataset options (further detail on website) pre-curated or custom curated de-identified EHR, Limited Dataset, Full PHI EHR dataset, Imaging, Select clinical notes, select genomics data, synthetic data
60+ studies from NHLBI BioData Catalyst	Selected large-scale cohorts related to heart, lung, blood and sleep disorders. Includes both prospective clinical studies and associated genomic TOPMED data.	De-identified dataset. Including individual level genomic (TOPMED full genomes) and clinical datasets.
Selected 15 Open datasets on AWS	A variety of datasets available including clinical and genomic data	Public data, and controlled access data (depends on dataset)
NIH All of Us	The All of Us Research Program is building one of the largest biomedical data resources of its kind.	The All of Us Research Hub stores health data from a diverse group of participants from across the United States.

You are also welcome to bring your own data and/or stakeholders.



Application Process using InfoReady

Tips to Prepare Before Applying



- **Read** the Call for proposal **carefully**
- **Check** Eligibility criteria
- **Start** the application **ASAP**
- Don't be bashful - **talk to your hub** representatives (<https://www.aim-ahead.net/leadership-core/>)
- **NIH Biosketch** is required ([Biosketch Format Pages, Instructions and Samples | grants.nih.gov](https://grants.nih.gov/grants/submitting/biosketch/format/index.htm))
- **Ask questions:** Zoom chat right now, Q&A session immediately following webinar

Required elements of the proposal



- Title
- Project summary/abstract (1 page)
- Project description
- Specific aims (1 page)
- Research plan (5 pages + 3 pages for references)
 - Background and significance
 - Preliminary studies (if available; otherwise indicate n/a)
 - Research design and methods
- Detailed Budget and Budget Justification
- Required format: Arial font and no smaller than 11 point; margins at least 0.5 inches (sides, top and bottom); single-spaced lines.

Click on “Apply” and login using your AIM-AHEAD Connect Account

1

Submission Guidelines

The AIM-AHEAD Consortium utilizes the online portal [InfoReady](#) to upload and submit each completed component of proposal applications. **Please use Chrome, Firefox, or Edge.** — *If you are using Safari, make sure to clear your cache before logging in.*

Applications can be submitted using the *InfoReady* platform.

Step 1: [Click here to register](#) as a “mentee/learner” on AIM-AHEAD Connect (our Community Building Platform)

Step 2: [Click here to submit a fellowship application](#) for review using the InfoReady platform

Please note both steps must be completed for consideration.

*****All applications must be received by Monday, June 23, 2025 — 11:59 p.m. Eastern Time**

*****Late applications will be returned unreviewed.**

#1 can be found at the bottom of the CFP

2

AIM-AHEAD

Log In | Help

HOME CALENDAR

3

AIM-AHEAD

HOME CALENDAR

Login for All Users

Use your AIM-AHEAD user name and password to log into InfoReady.


AIM-AHEAD Login

Fill out the application to the best of your ability



Application title *

Enter field description

 Settings

Project summary/abstract (1 pg maximum) *

Provide a succinct description of the proposed work including the project's long-term objectives, and a description of the research design and methods for the entire AI/ML project.

Drag and drop a file here or click the button below to select a file to upload

Budget and Budget Justification



Budget justification *

The budget justification should entail a narrative explanation of each of the components of the costs for performing proposed work. The budget explanations should focus on how each budget item is required to achieve the project's objectives and how the estimated costs in the budget were calculated.

Drag and drop a file here or click the button below to select a file to upload.

Please note: There is a Budget Template for you to download on the application homepage.

Submitting your application



I acknowledge that I am a US Citizen, Permanent Resident, or Non-Citizen National *

No

Yes

Comments to the Administrator(s).

Previous

Preview

1. Scroll down and click on "Preview".

2. After carefully reviewing your entire application scroll down and click on "Submit" button.

TIP: If you are not ready to submit yet, progress can be saved as a draft to complete later.

Comments to the Administrator(s).

Edit

Submit



Review Criteria

There are four review steps:

1. Administrative
2. Scientific
3. Programmatic
4. NIH

A Review Committee composed of AIM-AHEAD Consortium members will oversee these steps and criteria to evaluate proposals and recommend award recipients to NIH, which makes the final decision on awards.

Assessment of scientific merit will be guided by the specific questions related to the proposed project

- Relevance - Extent to which the proposal appropriately considers relevant AI/ML issues.
- Significance - importance of the problem, question or barrier being addressed by the proposal.
- Impact - Anticipated impact from successful project completion on our understanding aspects of AI/ML for health.
- Approach - Proposal clearly articulates the goals of the project and expected outcomes in terms of research products or other artifacts.
- Innovation - Extent to which the application challenges, shifts and improves the paradigms, approaches, methods or interventions relevant to ethics in AI/ML for health.
- Investigators - The team has the necessary background and capabilities to accomplish the proposed work in the expected project period.
- Environment – the team has necessary support from its institutions and access to the resources necessary to perform the research.
- The applicant's goals and expectations align with the AIM-AHEAD North Stars II, III and IV

North Star-I

Develop a representative AI/ML workforce with broad participation

North Star-II

Increase knowledge, awareness and national-scale community engagement and empowerment in AI/ML

North Star-III

Use AI/ML to improve behavioral health, cardiometabolic health and cancer outcomes for all

North Star-IV

Build community capacity and infrastructure ion AI/ML to address community-centric health needs and challenges



Deadlines and Links

Important Dates

Solicitation Release: April 23, 2025

Application Deadline: **June 23, 2025 - 11:59 pm Eastern**

Funding Decisions Expected: September 2, 2025

Earliest Award Start Date: September 15, 2025

Visit <https://www.aim-ahead.net/> for updates

CFP: [AIM-AHEAD Consortium Development Program - Year 4: Fostering Trustworthy AI Research to Advance Health and Medicine for All Americans \(FAIR-MED\)](#)

Application in InfoReady: <https://aim-ahead.infoready4.com/#>

NIH Biosketch:

<https://grants.nih.gov/grants-process/write-application/forms-directory/biosketch>

Help Desk: <https://helpdesk.aim-ahead.net/ticket/create/2cF4839739>

